

POK-2+ Handheld OTDR Kit (palm-OTDR)



Description

POK-2+ is designed for FTTX application. It can test the length, fiber loss connector loss and other physical characteristics of fiber. Meanwhile, with up to 65534 sampling points, it can locate events on fiber cables precisely. It is really the tool of choice for FTTX application installation and maintenance as well as for fiber R&D and producing testing.

POK-2+'s rugged design, lightweight and easy operation, as well as the low-reflection LCD and more than 10 hours battery life make it be perfect in field testing. Meanwhile, Its two USB interfaces help to store and transfer traces easily and conveniently.

Merits

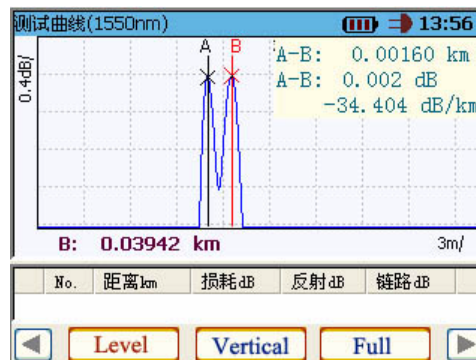
- Handheld, light weight, easy to catch
- Advanced anti-reflection LCD, clear seeing even in field-testing.
- 1.6m ultra short event deadzone, ideal tools for jumper tools.
- Auto mode and manual mode.
- Double USB interfaces, easy storage and transfer of traces.
- Support Bellcore GR196.
- WinCE operation system, Chinese Language and English available.
- 10 hours battery life, ideal for field testing
- VFL (visual fault locator) function, outstanding in checking jumpers and short fibers.
- Movable connectors

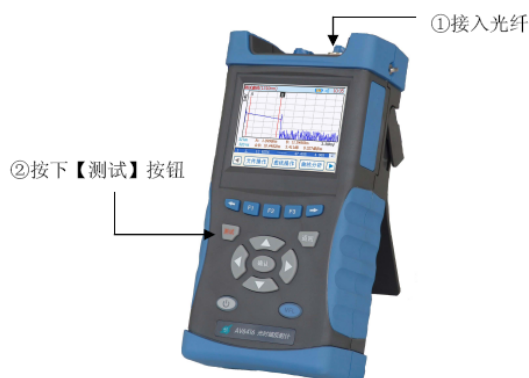
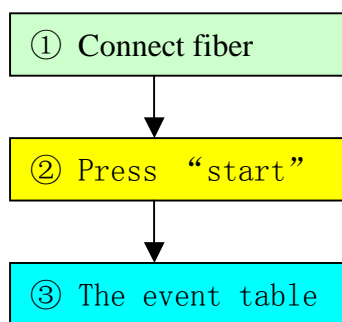
- **Ultra-short event deadzone**

POK-2+'s ultra-short event deadzone make it excellent in short fiber testing and fiber jumper testing.

- **Fast Auto testing**

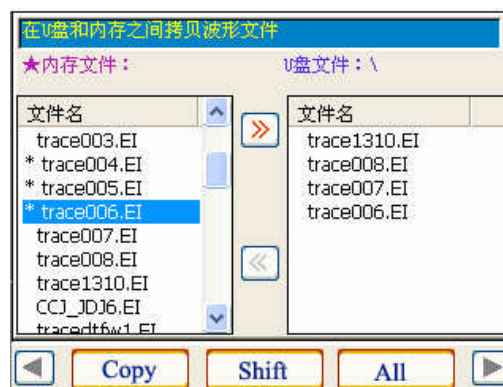
The Auto mode of POK-2+ makes OTDR measurement simple and intelligent with its one-button function. This mode automatically evaluates the fiber length, sets test parameters, and performs acquisitions and displays event tables and traces.





• **Excellent data management**

POK-2+ OTDR has outstanding data management. Not only can it save, view and delete the documents, but also can print the traces and tables directly with the laser prints that support PCL language. As well, POK-2+ can realize high-speed transfer between testers and PC by the Sync Active software through USB data cable.



Documents management and transfer

• **Easy VFL (visual fault locator) function**

With POK-2+'s Visual fault locating (VFL) function, users can locate the broken points and event points with big fiber loss easily and rapidly, so as to maintain fibers.



Three testing Mode

POK-2+ handheld OTDRs have three testing modes: Manual mode (real time and average), Auto mode and Deadzone Mode.

Manual Mode: This mode is mainly for experienced operators to get more precise testing. In this mode, users can real-time mode or average mode. The former is to monitor the fiber link's dynamical change and connect quality. The average mode helps to restrain the noise in traces testing to get precise testing results. More the testing times, more precise the traces are, and more time it need. So users can choose corresponding times according to the situations.

Auto Mode: In this mode, OTDR can evaluate the fiber under test and set optimized parameters and provide traces and tables. The operators don't need to know complex technical back groundings and details operating steps. To improve the precision, users can increase the average times. More time is needed as a result.

Deadzone Mode: this mode is to test the ultra-short fiber, such as the fiber jumpers' length. The return loss of the fiber end should be more than 40dB.

Specifications

Model	3528	5626	3428
Central wavelength	1310/1550nm±20nm	1550/1625nm±20nm	1310/1550/1490nm±20nm
Fiber mode	Single mode fiber	Single mode fiber	Single mode fiber
Dynamic Range ¹	28/26dB	26/24dB	28/26/24dB
Distance precision	± (1m+ sampling space +0.003%× distance) (IOR difference not included)		
Event deadzone ²	1.6m		
Distance resolution	0.25、0.5、1、2、4、8、16m		
Distance range	4、8、16、32、64、128、256km (single mode) ;		
Pulse	10、30、80、160、320、640、1280、5120、10240ns		
Loss threshold	0.01dB		
Sampling point	65534		
Linearity	0.05dB/dB		
Internal memory	≥800		
IOR range	1.00000~2.00000		
Display	320×240、3.5 inch color touch screen.		
Interfaces	USB、Min-USB		
Fiber connector	FC/UPC (or SC)(universal connector optional)		
Power supply	AC/DC adaptor:100V~240V (1.5A) , 50/60Hz DC: 15V~20V (2A) Internal rechargeable battery: 10 hours		
Language	Chinese language/ English		
Temperature	work: -5℃~40℃; storage: -40℃~70℃		
Related humidity	5%—95%, non-condensing		
Size	210 mm×100mm×60mm		
Weight	980g		

Comments:

1. 23℃±2℃, max pulse width, SNR=1.
2. deadzone mode(distance range 4Km, pulse width 10ns, attenuation 10dB), return loss ≥ 40dB, typical value

Other information

- **Main frame**

POK-2+ handheld OTDR one unit

- **Accessories**

Item	Name	Quantity
1	Power cable	1
2	AC/DC adaptor	1
3	Manual Book	1
4	Disk with software	1
5	Carry plastic case (with shoulder strap)	1
6	Internal rechargeable battery	1

-

POK-2+ ordering information

POK-2L+	1310/1550nm double wavelengths, 28/26dB, with a Multi Tester POL-580
POK-2CL	1310/1550nm/1490nm Tri-wavelength, 28/26/24dB, with a Multi Tester POL-580
POK-2-5626	1550/1625nm double wavelengths, 26/26dB.

Address: 25C-D, Gloria Court, Metro Paradise, No 358 TianHeBei Road, Guangzhou, China (510620)
TEL: +86-20-38869769 FAX: +86-20-38869715 Service Center : +86-20-38869769-158 38861915
Web Site: <http://www.tsh-tech.com> Email: tsh@tsh-tech.com Service Center : service@tsh-tech.com